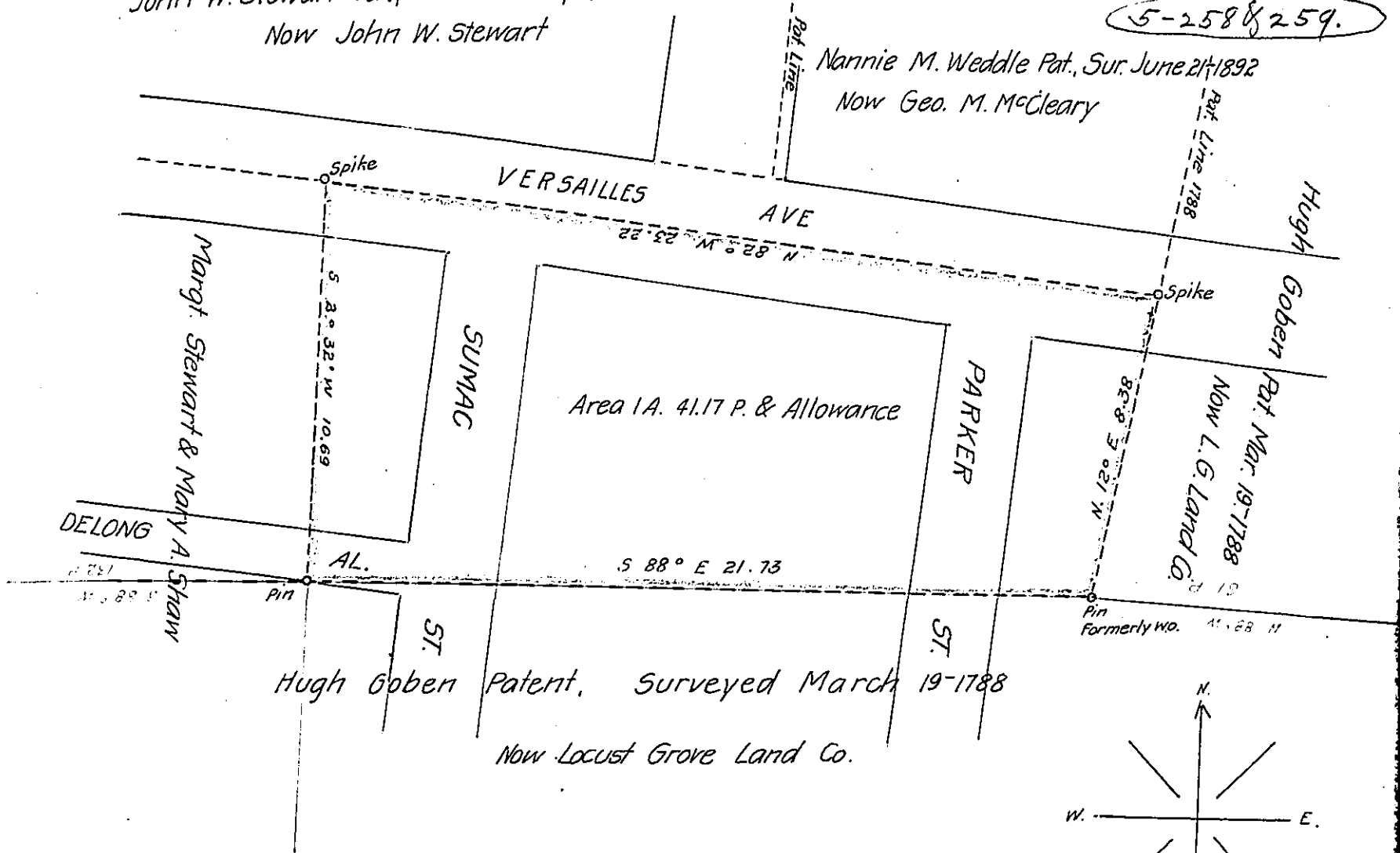


John W. Stewart Pat., Sur. June 21, 1892
Now John W. Stewart

Nannie M. Weddle Pat., Sur. June 21, 1892
Now Geo. M. McCleary



Note:- Yellow Line shows southerly boundary of Jacob Zeinet Tract.

A Draft of a tract of land situated in the ^{City} ~~Township~~ of McKeesport and County of Allegheny, containing one (1) acre $41 \frac{17}{100}$ perches and allowance of six per cent. for roads, etc. Surveyed for the Locust Grove Land Company the seventeenth day of February 1903 it being part of a larger tract containing two hundred and twelve (212) acres, twenty three (23) perches and allowance, originally surveyed ~~in pursuance of a warrant granted to~~ on Order No. 3344 to ~~dated the~~ Jacob Zeinet, ~~day of~~ June thirteenth 1769

Approved,

Chas. Davis

County Surveyor

To James W. Latta Esq.,

Secretary of Internal Affairs.

IN TESTIMONY that the above is a copy of the original remaining on file in the Department of Internal Affairs of Pennsylvania, made conformably to an Act of Assembly approved the 16th day of February, 1833, I have hereunto set my Hand and caused the Seal of said Department to be affixed at Harrisburg, this twenty eighth day of November 1905

James W. Latta
Secretary of Internal Affairs.